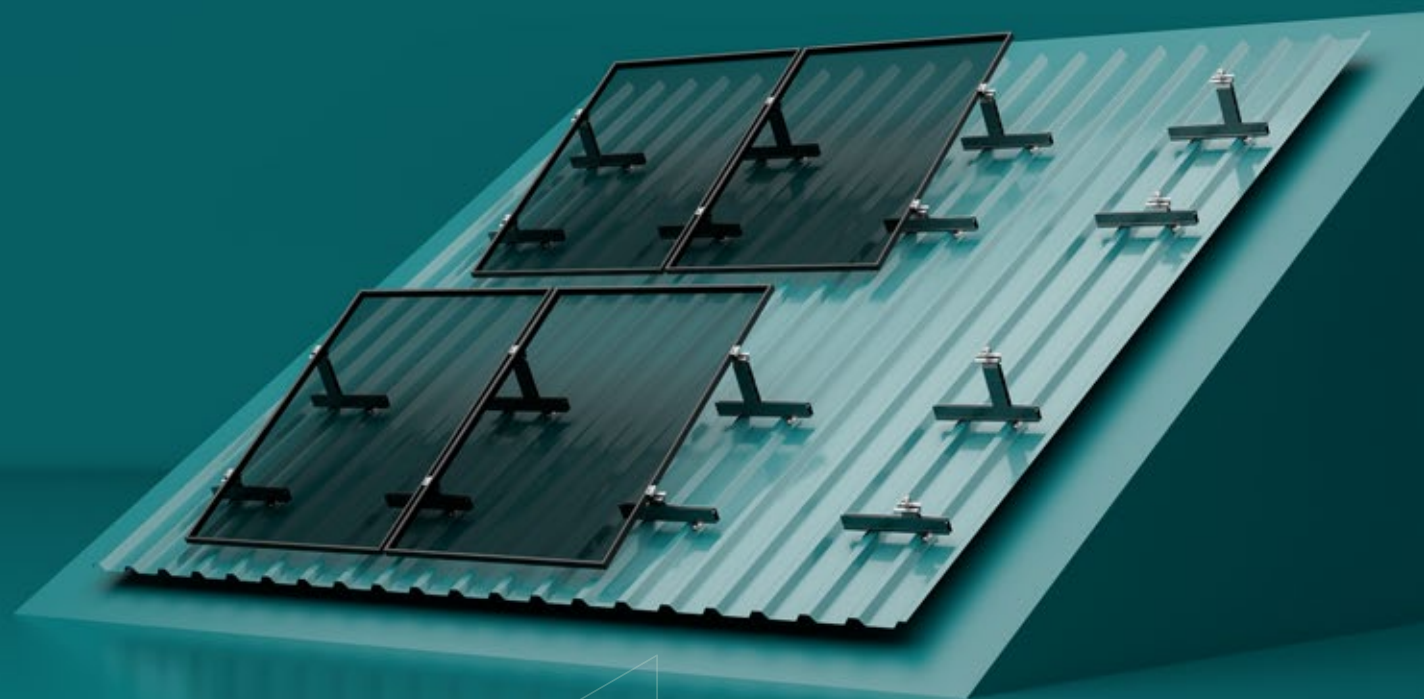


**SCHLETTER**

# **SOLAR MOUNTING SYSTEMS**

ROOF



# WE SUPPORT SOLAR.

AT SCHLETTER, WE BELIEVE  
THAT ANY ENTERPRISE, BIG OR  
SMALL, CAN ONLY BENEFIT FROM  
PASSIONATE SUPPORT.

And if ever there were an industry worth supporting, it's solar. Which is why we care about the success of every solar company, including yours.

We're here to urge you forward and support your initiative with products engineered to ensure the success of your projects – which will change our lives, and the planet, for the better.

If you don't deserve our support, who does?



**WATCH OUR NEW  
BRAND FILM**







# UNCOMPROMISING QUALITY

SCHLETTER'S PRODUCTS ARE DESIGNED TO WITHSTAND ALL WEATHER CONDITIONS.

For the past few decades, we've dedicated ourselves to improving durability, safety, sustainability, and especially the quality of our solar mounting systems. Our quality control process is painstaking, meticulous, and uncompromising, and we use only the highest-quality steel and aluminum.

Specifically designed to combat inclement weather on any terrain, our mounting structures can withstand the harshest conditions – storm-strength winds, torrential rain, excessive snow-loads, sandstorms, or even earthquakes – for 25 years or more.



# PRODUCT PHILOSOPHY

Our holistic approach to product development encompasses material selection, structural integrity, and environmental impact. Our solutions reflect this belief, balancing affordability, safety, and sustainability.

## STRUCTURAL SAFETY

1. Optimal material utilization
2. Verified supplier quality
3. Secure design calculation
4. Detailed construction

## SUSTAINABILITY

1. Sustainable material selection
2. High durability
3. Reusable materials
4. Low maintenance

## PERFORMANCE OPTIMIZATION

1. Superior material utilization
2. Efficient manufacturing process
3. Optimized logistics
4. Time-saving assembly



# THE RIGHT SOLUTION

Schletter offers a comprehensive risk management solution that considers various factors, such as environmental conditions. We support you with our engineering expertise to ensure your modules' safety and optimum performance.



# PROLINE

## UNLIMITED POSSIBILITIES.

Improving the efficiency of solar installations remains the driving force in the PV sector. Our new ProLine series meets the requirements of tomorrow's mounting systems by using less material and offering better load-bearing capacity, simplified planning, improved handling on site, and optimized installation times. Using these requirements as our goals, we engineered the ProLine series, a new generation of solar mounting systems for residential and industrial roofs – now also available in black.

### MATERIAL EFFICIENCY

ProLine reduces material usage and incorporates fewer parts, making it more sustainable and cost-effective.

### HIGH DURABILITY

With increased strength and load-bearing capacity, ProLine ensures long-lasting performance, even in challenging conditions.

### COMPATIBILITY

ProLine components are backward compatible, allowing you to combine them with existing roof hooks and module clamps seamlessly.

### EASY INSTALLATION

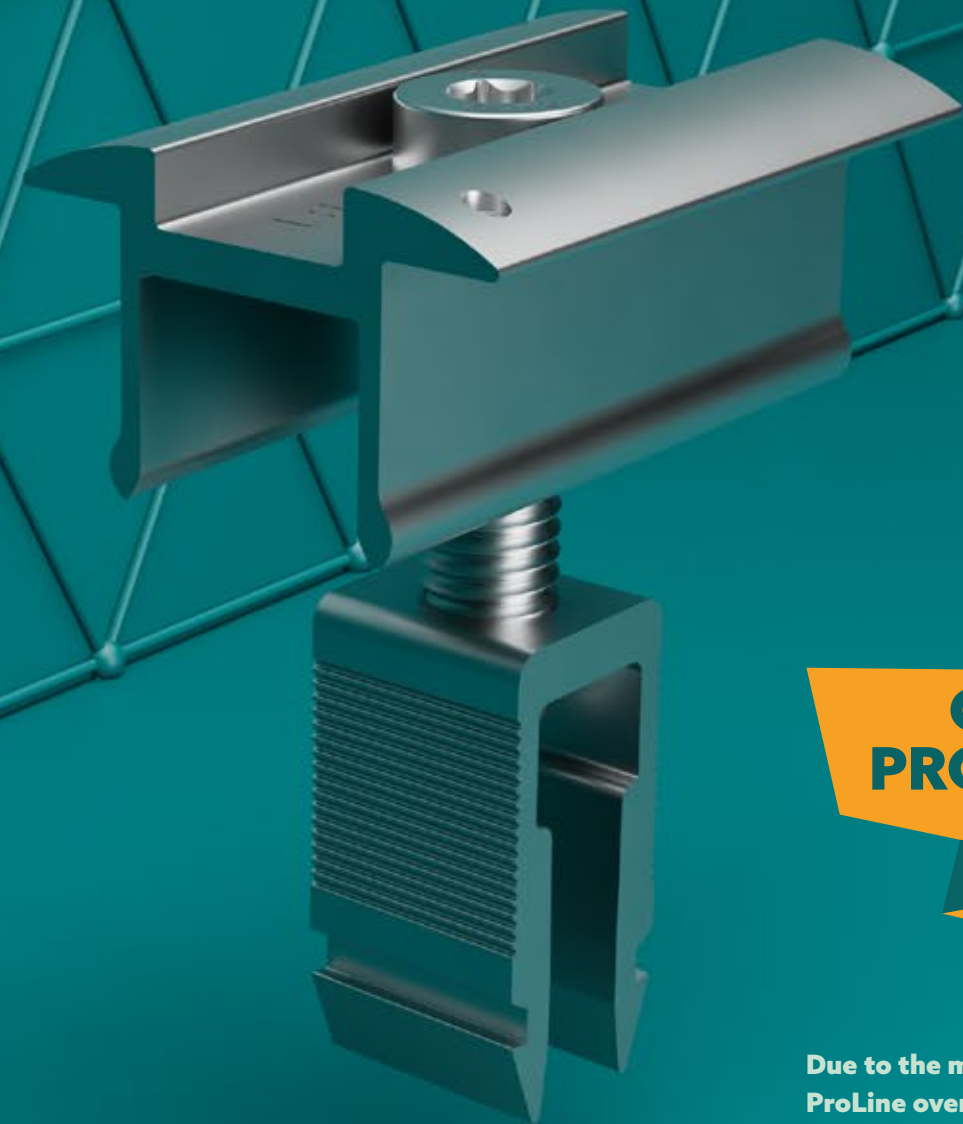
ProLine simplifies the installation process by only using Torx T40 screws, saving time and effort for installers.

### LIGHTWEIGHT DESIGN

The lightweight design of ProLine makes it easier to handle, transport, store, and install, improving efficiency overall.

### SIMPLIFIED PLANNING

ProLine's compatibility and streamlined design reduce the number of parts and facilitate the planning process, making project management more effortless.



**GO  
PROLINE**

Due to the many advantages of ProLine over our Classic rooftop systems, ProLine will become our primary rooftop system by January 2024 – by then, we will have doubled our production volume compared to 2023 with our new production plant in Türkiye.



# PITCHED ROOF SOLAR MOUNTING SYSTEMS

PARALLEL OR ELEVATED MOUNTING  
FOR ANY ROOF AND PITCH.

Given the extensive range and dynamic modular structure of Schletter's mounting systems, we can support solar modules on nearly any roof pitch. Better yet, we offer our racks for all solar modules currently on the market.





# 33

## SCHLETTER MOUNTING SYSTEMS FOR ALL CONCEIVABLE ROOF AND TILE TYPES.

OUR DYNAMIC MODULAR STRUCTURE AND THE EXTENSIVE RANGE OF SYSTEMS WE OFFER ALLOW US TO ADAPT TO THE CHARACTERISTICS OF ANY ROOF OR FACADE.

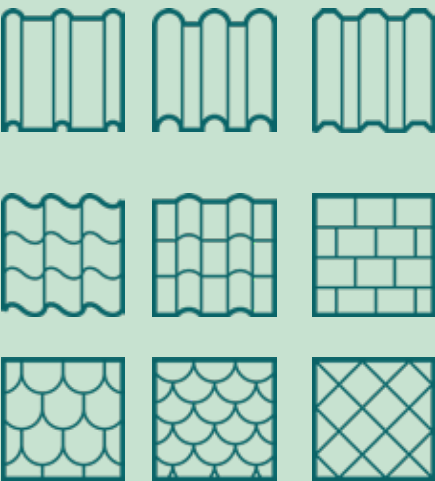
### ROOF TYPES

Our mounting systems are designed for a variety of roof types, including flat, pitched, standing seam, and corrugated, with each component manufactured to ensure a safe, secure, and stable installation.



### ROOF TILES

Whether it's slate, ceramic, concrete, or any other type of roof tile, our mounting systems are designed to provide a safe and durable installation for a wide range of tile sizes and styles.



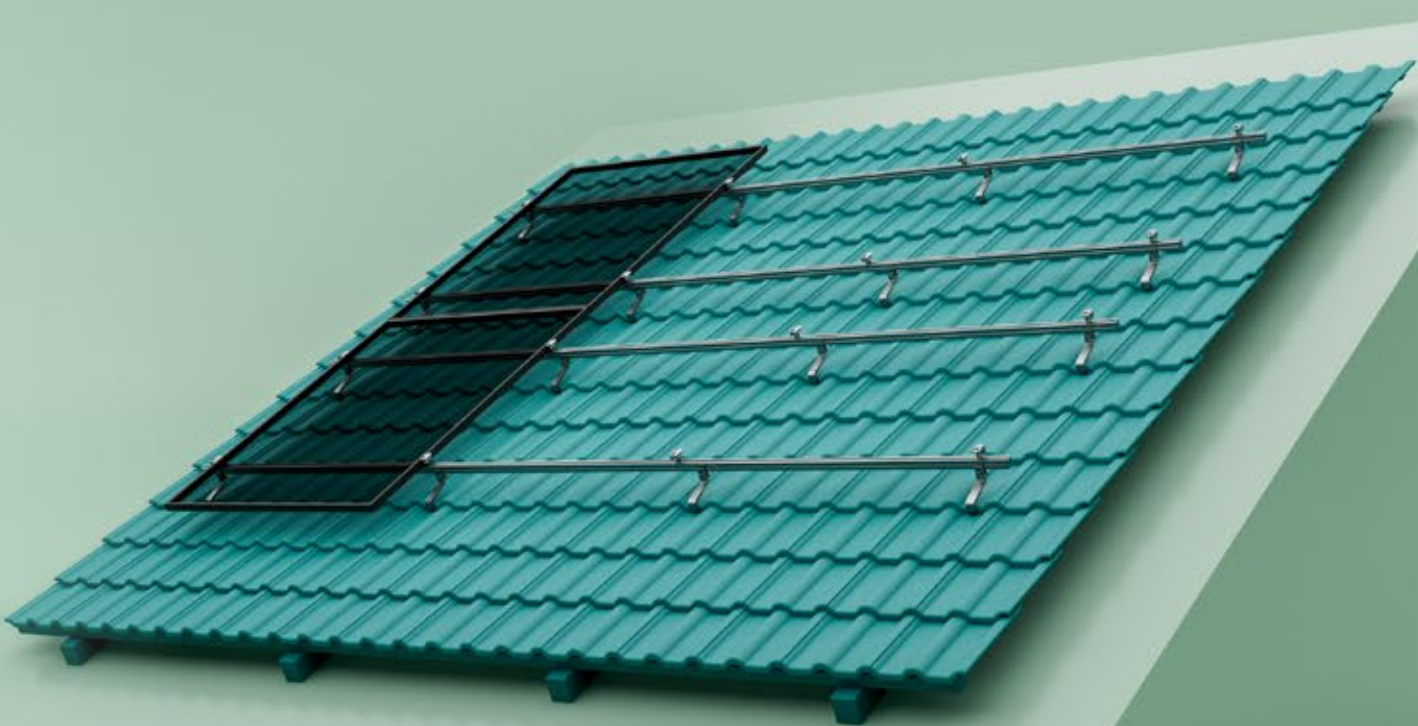


# 23

## ROOF HOOKS FOR EVERY SITUATION IMAGINABLE.

DESIGNED TO BE HIGHLY DURABLE, EASY TO INSTALL, AND CAPABLE OF CARRYING HEAVY LOADS.

- + Roof hooks for all common tile types
- + Compatible with our Classic and ProLine rails
- + Quick and simple assembly
- + Easy to store
- + High quality materials
- + Height adjustable



### STAINLESS STEEL ROOF HOOKS

Versatile, robust, welded stainless steel.



### HIGH-GRADE STEEL ROOF HOOKS

Welded, for heavy snow loads with protective zinc flake coating.

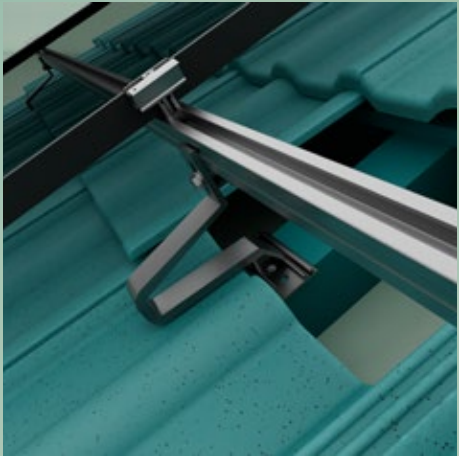


### ALUMINUM ROOF HOOKS

Lightweight, economical, and efficient.



WATCH ASSEMBLY  
VIDEO





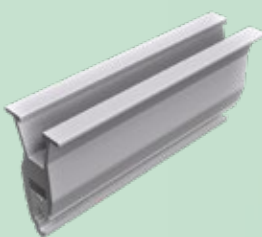
# 10

## SEAM CLAMP VARIATIONS

RELIABLE MOUNTING SOLUTIONS FOR STANDING SEAM ROOFS, PROVIDING A SECURE AND DURABLE FOUNDATION FOR SOLAR MODULES.

Schletter's wide range of seam clamps has been developed to fit the requirements of any seam roof manufacturer, providing a universal solution.

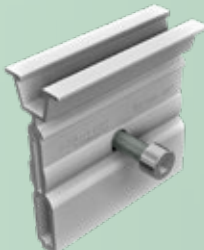
- + Can be combined with all Classic profiles from Schletter
- + Quick assembly
- + Variable use
- + Excellent value
- + Easy to store



SEAM CLAMP PRO 504



SEAM CLAMP PRO 503



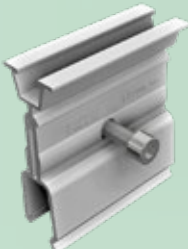
SEAM CLAMP PRO 524



SEAM CLAMP PRO 510



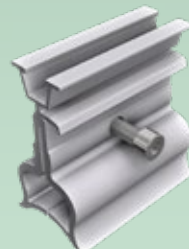
SEAM CLAMP PRO 520



SEAM CLAMP PRO 522



SEAM CLAMP PRO 551



SEAM CLAMP PRO 562



SEAM CLAMP PRO 525  
STAINLESS STEEL



SEAM CLAMP 503  
STAINLESS STEEL



WATCH ASSEMBLY  
VIDEO





4

HANGER BOLT VARIATIONS

EXCEPTIONAL STRENGTH AND VERSATILITY FOR ALL ROOF TYPES WORLDWIDE.

Schletter hanger bolts provide a secure and strong means of attaching solar modules to a wide variety of roof surfaces.

- + Hanger bolt solutions for fiber cement roofs
- + Compatible with Schletter Classic profiles
- + Provide excellent stability on sloped, flat, and trapezoidal surfaces
- + Large variety



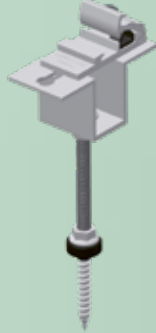
HANGER BOLT WITH MOUNTING PLATE

For corrugated or trapezoidal sheet roofs with EPDM seal and a mounting plate.



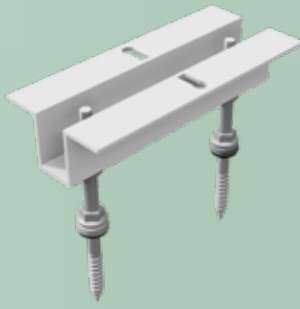
HANGER BOLT WITH KLIKKTOP PRO

Hanger bolt mounting adapter for Classic and ProLine module support profiles.



HANGER BOLT WITH UNIVERSAL ADAPTER UNO

Universal Adapter Uno M8 for steel purlin. Universal Adapter Uno M10 / M12 for fixing into wooden substructures.

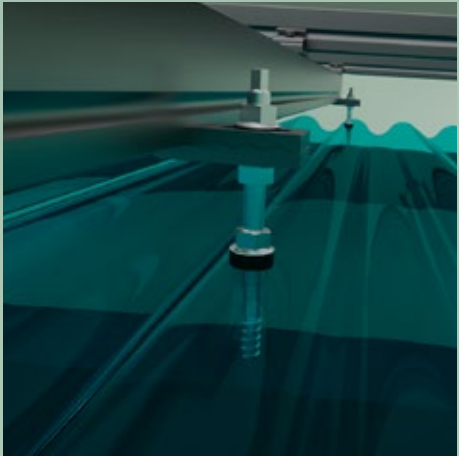


HANGER BOLT WITH UNIVERSAL ADAPTER DUO

For standard fiber cement corrugated sheets. The ideal choice where there are increased wind and snow loads.



WATCH ASSEMBLY VIDEO





3

TRAPEZOIDAL SHEET CONNECTORS

FITS ANY SHAPE OR FORM: MOUNTING SOLUTIONS FOR TRAPEZOIDAL SHEET METAL ROOFS.

- + Compatible with all Schletter Classic profiles
- + Screws onto the side of the trapezoidal sheets for optimum load distribution
- + Innovative system to connect to the substructure



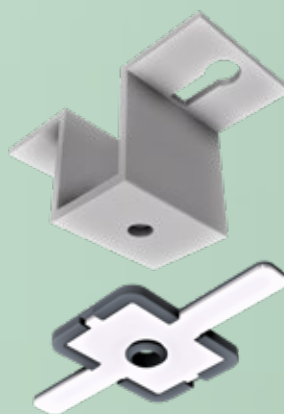
CLAMPFIT PRO

The cost-optimized trapezoidal sheet metal fastening system for steel and aluminum sheets from 0.5 mm.



SINGLEFIX PRO

Direct fastening of trapezoidal sheets for sheet metal thicknesses from 0.5 mm.



UNIVERSAL ADAPTER

The universal fastening system for self-supporting trapezoidal sheet roofs and sandwich elements.



WATCH SINGLEFIX ASSEMBLY VIDEO



WATCH CLAMPFIT ASSEMBLY VIDEO





# 7

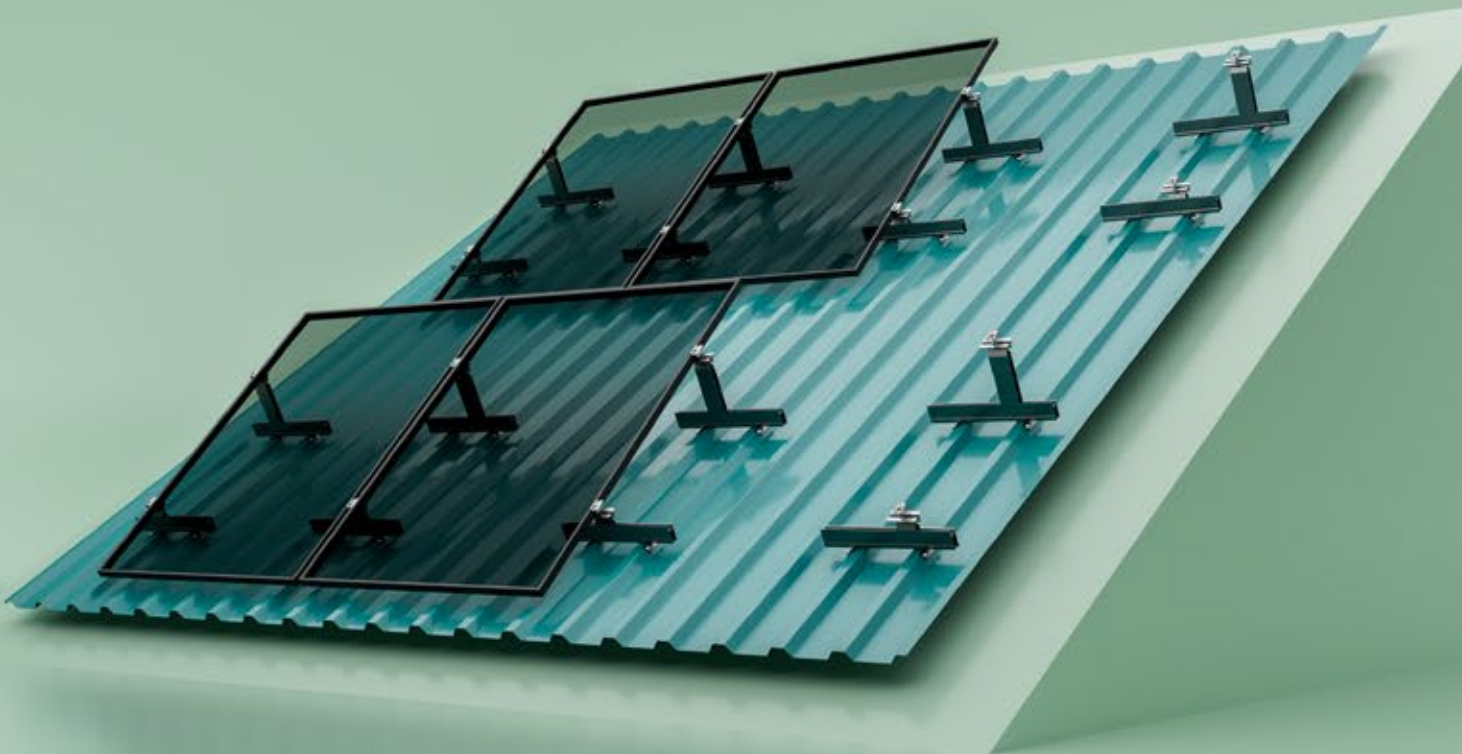
## FIX-Z SHEET CONNECTORS

THE FIX-Z IS THE OPTIMAL ADDITIONAL SUPPORT FOR FLAT, INCLINED, AND TRAPEZOIDAL SHEET METAL CLADDINGS.

For trapezoidal roofs with a slope of less than ten degrees, installing modules parallel to the roof may not be ideal for maximizing yield or self-cleaning. At the same time, higher loads often make conventional support using struts infeasible or not cost-effective.

In such cases, shallow support angles are preferred. Schletter FixZ-Pro provides a simple and cost-effective solution for these situations.

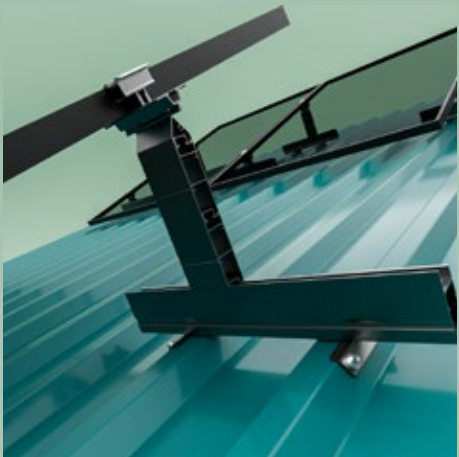
- + Quick and easy to mount
- + Improved rear-ventilation
- + Enhanced self-cleaning
- + Optimum load transfer through roof cladding
- + Extra yield with favorable system price
- + Additional inclinations possible



7° OR 15°



INCLINATION ANGLES BETWEEN 7° AND 15° POSSIBLE.

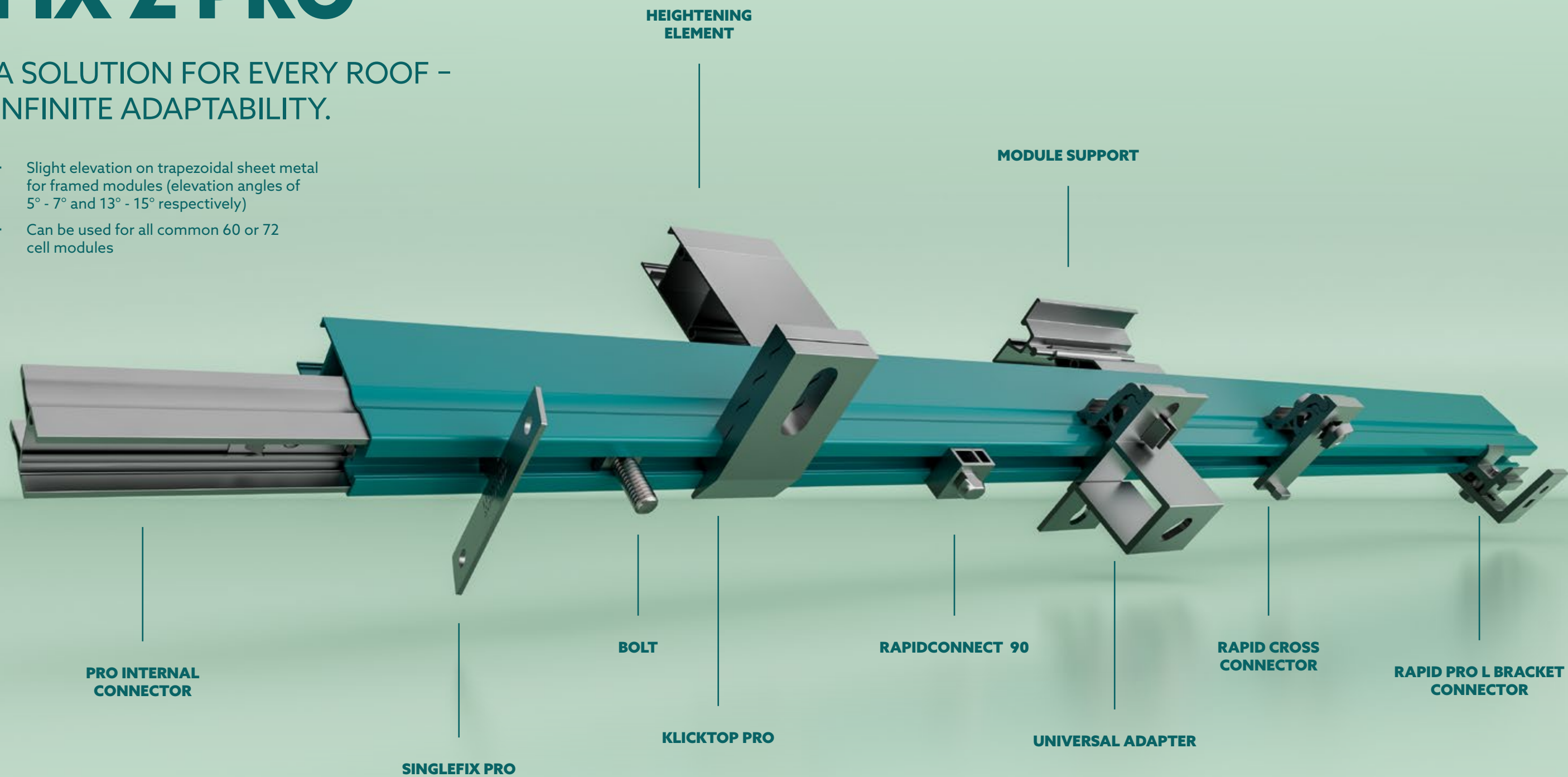




# FIX-Z PRO

A SOLUTION FOR EVERY ROOF –  
INFINITE ADAPTABILITY.

- + Slight elevation on trapezoidal sheet metal for framed modules (elevation angles of 5° - 7° and 13° - 15° respectively)
- + Can be used for all common 60 or 72 cell modules





# FLAT ROOF SOLAR MOUNTING SYSTEMS

## BALLASTED OR FASTENED – FOR ANY MEASUREMENTS.

Schletter's flat roof mounts are specially designed for quick and easy installation to match structural conditions: experienced engineers calculate the optimum design for your roof's unique shape, size, and slope, to ensure that loads are within limits and are spread optimally over the building's structure.

In addition to wind speed and snow load limits, our designs comply with all appropriate building regulations. Extensive planning and intelligent design procedures ensure that the integrity of your roof is never compromised and remains completely leak-proof.

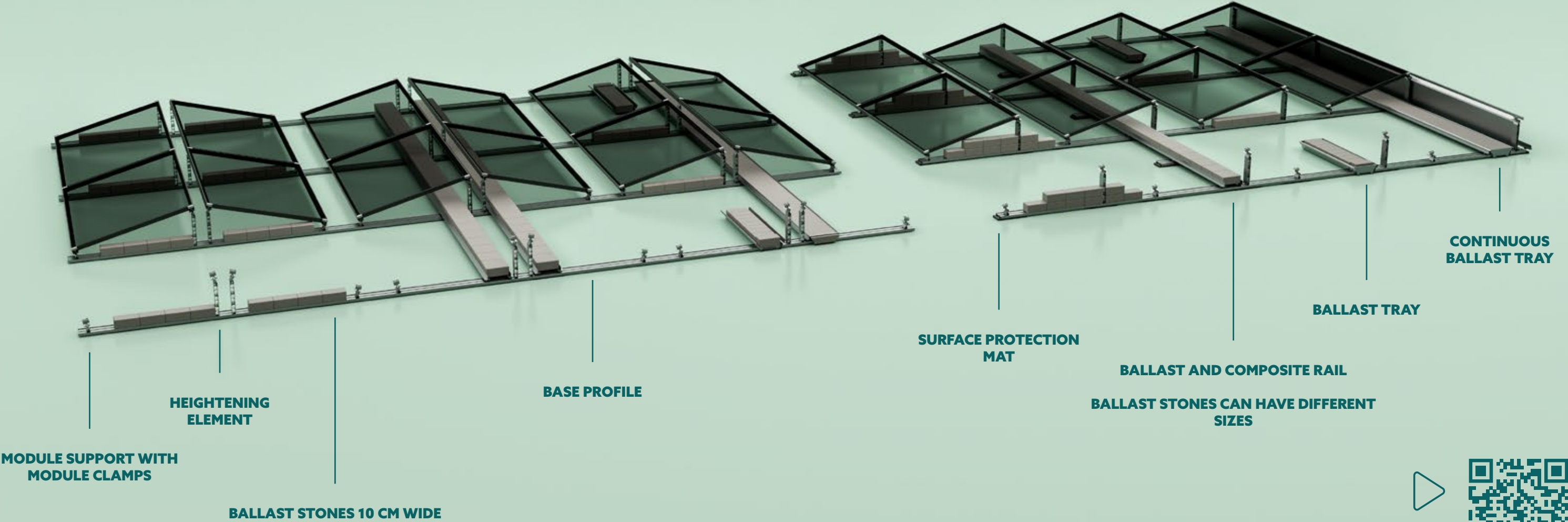
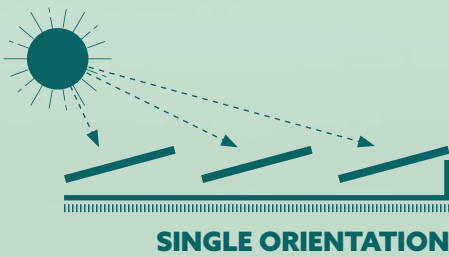
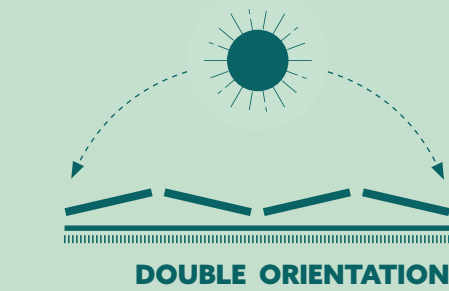




# FIXGRID PRO

FIXGRID PRO LETS YOU ADJUST THE DESIRED ANGLE OF INCLINATION FLEXIBLY. CREATE AN INFINITE NUMBER OF VARIATIONS WITH JUST A FEW COMPONENTS.

- + Ballast optimization and reduction through improved aerodynamics
- + Flexible and time-saving planning and assembly
- + Compatible with module clamps from the ProLine series
- + Tool-free assembly of the heightening elements
- + Modules can be mounted portrait or landscape and clamped either on the short or long side
- + Possible module inclination of 5/10/15 degrees, independent of module clamping, orientation, and size



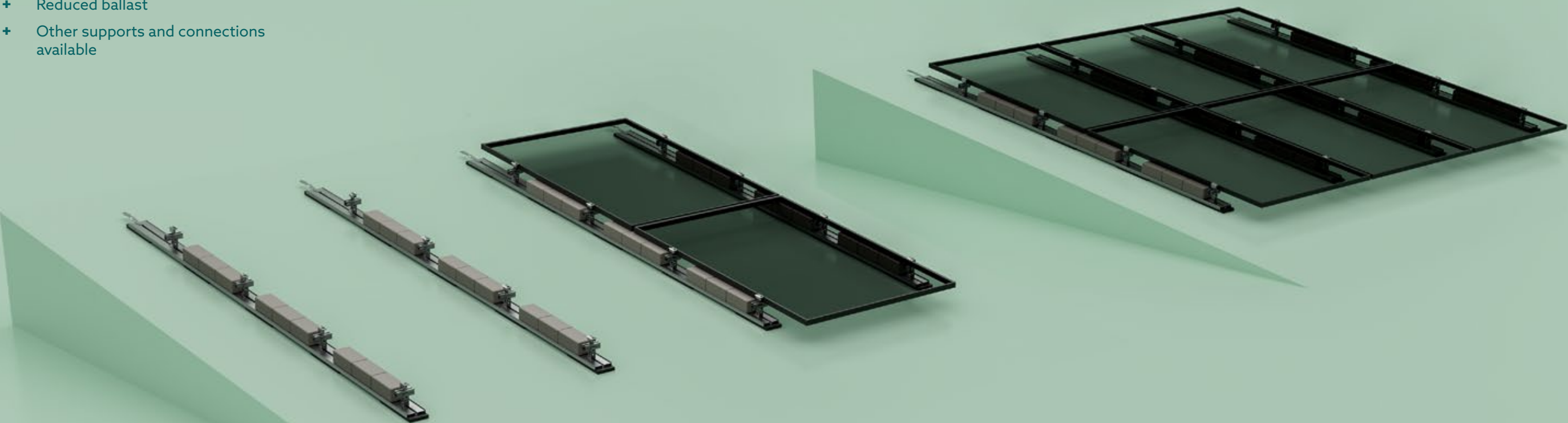
WATCH ASSEMBLY VIDEO



# FLATGRID PRO

A SINGLE, COST-EFFECTIVE MOUNTING UNIT FOR SLIGHTLY PITCHED OR FLAT ROOFS, FEATURING A PARALLEL FLUSH MOUNT DESIGN THAT IS COMPATIBLE WITH MOST SCHLETTER COMPONENTS.

- + Very few superimposed loads required
- + Integrated surface protection mat
- + Optimized for material and cost
- + No roof penetration
- + Reduced ballast
- + Other supports and connections available



10°



MOUNTING ON A TERRAIN WITH AN ANGLE OF INCLINATION OF UP TO 10°.



# WE SUPPORT SUSTAINABILITY

SCHLETTER'S COMMITMENT TO CORPORATE SOCIAL SUSTAINABILITY IS DRIVEN BY ENVIRONMENTAL STEWARDSHIP AND ETHICAL BUSINESS PRACTICES.

At Schletter, we are deeply committed to corporate social responsibility (CSR) and sustainability, striving to incorporate social, environmental, and ethical considerations into our business practices. Our aim is to contribute positively to society and the environment while minimizing our impact on the planet.

We intend to enhance our CSR strategy to advance our environmental sustainability efforts, including reducing carbon emissions by exploring options for renewable energy sourcing, optimizing supply chain transportation, and adopting more sustainable production processes. We are also implementing measures to minimize waste, expanding recycling programs and reducing water usage per MW produced.

Our dedication to treating our employees, suppliers, and customers fairly while promoting diversity, equity, and inclusion remains unwavering. We prioritize ethical sourcing practices, ensuring our suppliers adhere to ethical labor standards and environmental regulations. Additionally, we are committed to expanding our social initiatives while supporting local communities.

As part of our commitment to transparency and accountability, we aim to publish a sustainability report for the financial year 2023, demonstrating our efforts to create a sustainable future and have a positive impact on society and the environment.



**>28.3  
MILLION  
TONS**

CO<sub>2</sub> SAVED BY PV INSTALLATIONS  
ON OUR MOUNTING SYSTEMS  
PER YEAR

Read more about our sustainability at:  
<https://www.schletter-group.com/company/sustainability/>

Source for conversion formula: German Federal  
Environmental Agency and Solarcluster BW

# BEHIND YOU ALL THE WAY.

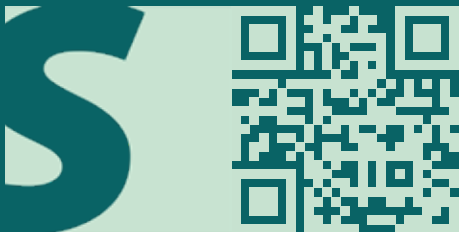
Mounting a photovoltaic system requires more than a mere metal clamp. It needs a plan thoroughly thought through and adapted to suit actual circumstances. It starts with initial soil or structural analyses and ends with tightening the very last screw. We accompany our customers through the entire process. With our uncompromising quality standards at every project stage, we ensure that our top quality products and solutions reach their full potential. This care and our holistic approach are an integral part of our company's DNA.

No matter how broad or long-term your vision or ambitious or imaginative your goals, when it comes to solar, one company is behind you all the way.



<b>1968</b> FOUNDED IN BAVARIA, GERMANY	<b>&gt;45 GW</b> SYSTEMS INSTALLED WORLDWIDE
<b>&gt;580</b> PRODUCTS FOR ALL SOLAR MOUNTING NEEDS	<b>&gt;105</b> GLOBAL PATENTS SECURED
<b>&gt;110</b> COUNTRIES WITH SCHLETTER SYSTEMS INSTALLED	<b>&gt;700</b> EMPLOYEES WORLDWIDE





## **SCHLETTER GROUP**

ALUSTRASSE 1, 83527 KIRCHDORF, GERMANY  
[WWW.SCHLETTER-GROUP.COM](http://WWW.SCHLETTER-GROUP.COM)



Printed sustainably on eco-friendly  
recycled paper.