

The image features a yellow triangular shape in the top right corner. The SCHLETTNER logo is positioned in the upper right, with the tagline 'The Solar Mounting Group' below it. The main title 'LAY-IN SYSTEM DISTANCE PIECE' is centered in the white area. The text 'PRODUCT SHEET' is located below the title. The background is decorated with stylized green leaves and stems on the left and bottom right sides.

SCHLETTNER
The Solar Mounting Group

LAY-IN SYSTEM DISTANCE PIECE

PRODUCT SHEET

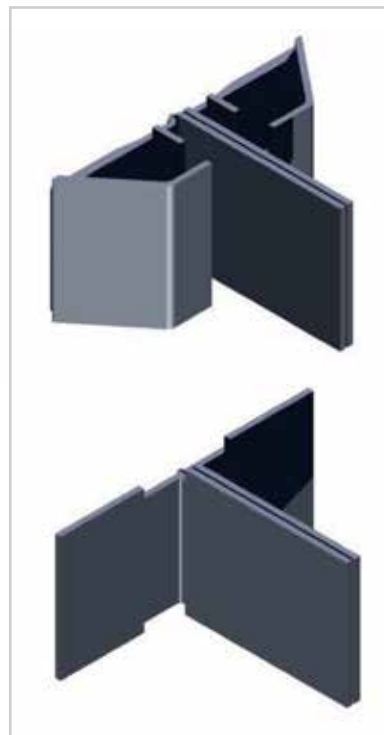
Distance piece for the lay-in system

Optimum protection for your modules

- Quick and simple mounting
- High UV-resistance (Material PA66 A3K)
- High impact resistance
- Efficient theft prevention



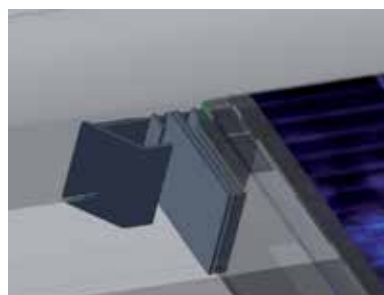
Distance pieces are used to close the gap between the profile and the inserted module. They safeguard a safe fastening of the module. Moreover, the distance pieces impede any incorrect and unauthorized removal of the modules (theft protection). Schletter distance pieces are made of a robust and weather-resistant material. They can be used with any module design.



149004-001

Top distance piece for the lay-in system

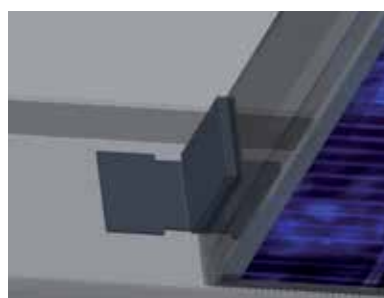
to be laid in between the modules. By breaking the distance piece at the predetermined breaking point, it can also be used at the sides.



149004-000

Bottom distance piece for the lay-in system

to be laid in between the modules. By breaking the distance piece at the predetermined breaking point, it can also be used at the sides.



SCHLETTER SOLAR GMBH

Alustrasse 1
83527 Kirchdorf
GERMANY

www.schletter-group.com

